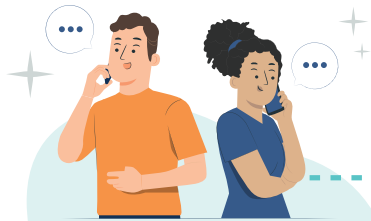


How Angel Tree Works

Kids registered at Christmastime are eligible for Angel Tree summer camps, sports camps, and other year-round ministry.



Incarcerated parent gets current information from caregiver.



Incarcerated parent fills out and turns in form.

Angel Tree assigns children to a church or organization, and a volunteer calls the caregiver to ask about gifts and delivery.



Chaplain distributes forms and notifies applicants of facility deadline and drop-off location.



Chaplain sends forms to Angel Tree®.



Church or organization gives a gift to prisoner's child along with their personal message.





PROGRAM GUIDELINES

1. Angel Tree is for children 18 years old or younger living in the U.S.
2. Parents, stepparents, and parental figures are invited to apply.
3. There cannot be an order of protection or administrative rule prohibiting contact.
4. Parent must have the legal authority to allow their child's information to be used by Prison Fellowship Angel Tree.

IMPORTANT REMINDERS

1. Personalize the posters included in your kit with your facility's deadline and where to return forms. Display the posters as soon as possible.
2. Forms must be postmarked by October 1.

3. Only forms and shipping labels from the current year will be accepted.
4. Downloadable forms to print are available on the Storehouse. Fillable PDF versions of the forms can be requested at chaplainresources@pfm.org.

RETURNING APPLICATIONS

1. Return completed forms using the provided envelopes and labels by October 1.
2. If not using the provided return packaging, please mail forms to: **Angel Tree Christmas, PO Box 1478, Bartlesville, OK 74003.**
3. Forms can also be returned electronically to AngelTreePPF@pfm.org.
4. Parents may return forms directly with prepaid envelopes available for order on the Storehouse (pfcommissary.org/the-storehouse).

For more resources or information, contact Angel Tree at 800.55.ANGEL or chaplainresources@pfm.org.